

Appendix E



East Stanislaus Integrated Regional Water Management Planning Region

Outreach and Communications Plan

1 Background

The purpose of this Stakeholder Outreach and Communications Plan is to specify the identified methodology and approach to ensuring the timely dissemination of information associated with preparation and implementation of an Integrated Regional Water Management (IRWM) Plan for the East Stanislaus IRWM Region. Specific focus is placed on outreach to disadvantaged communities (DACs), environmental justice (EJ) representatives, Native American tribes, and conservation organizations.

Beginning in July 2010, the four cities that will comprise the East Stanislaus Regional Water Management Partnership (ESRWMP), the cities of Modesto, Ceres, Turlock and Hughson, began coordinating to develop an IRWM Region and to begin the IRWM planning process that will ultimately result in an IRWM Plan for the East Stanislaus Region. The cities that will comprise the ESRWMP are currently in the process of executing the Memorandum of Understanding (MOU) for Integrated Regional Water Management Planning.

The ESRWMP understands the importance of engaging stakeholders and the general public throughout the water management planning and IRWM process and therefore provides various avenues for participation. This Stakeholder Outreach and Communications Plan will guide stakeholder outreach throughout the East Stanislaus IRWM planning and implementation process and will work to facilitate relationship building by promoting the active participation of local stakeholders through the entire process.

2 Outreach Goals and Objectives

The goal of the Stakeholder Outreach and Communications Plan is to ensure that the public is both aware of and a part of the integrated regional water management planning and implementation process in the East Stanislaus Region in order to develop a collaborative water management portfolio prioritized on the regional goals and objectives. The objectives of the Outreach Plan include, but are not limited to:

- Fostering coordination, collaboration, and communication among regional and local agencies responsible for water-related issues to achieve greater efficiencies, and to build public support for vital projects.
- Sharing findings and solicit community comments on draft project work products.

- Responding quickly and effectively to any questions or concerns that may arise during the IRWM planning process.
- Involving key stakeholders which represent most, if not all, East Stanislaus IRWM Region key interests and secure their support of the process with well-balanced representation and commitment.
- Sustaining Public Advisory Committee and Steering Committee member participation and level of effort through project completion.
- Establishing contacts within local organizations that can assist in broadening outreach efforts by communicating IRWM planning efforts and encouraging participation within their group.

3 Key Messages

To help the public and stakeholders understand the need for IRWM planning within the East Stanislaus Region, the ESRWMP has identified the key messages defining why an IRWM Plan is necessary and reasons for the associated collaboration among stakeholders.

1. The purpose of the East Stanislaus IRWM planning process is to develop an IRWM Plan outlining shared conflicts and issues, and to identify projects that will address these issues; by developing an IRWM Plan, the solutions will have multi-benefits and beneficiaries.
2. The East Stanislaus IRWM Plan will enable the Region to compete for future rounds of available funding through Propositions 84 and/or 1E and from future funding initiatives. Proposition 84, the Safe Drinking Water, Water Quality and Supply, Flood Control, River and Coastal Protection Bond Act of 2006, authorized Legislature to appropriate \$1 billion for IRWM projects that assist local public agencies in meeting long-term water needs. Proposition 1E, the Disaster Preparedness and Flood Prevention Bond Act of 2006, authorized Legislature to appropriate \$300 million for grants for stormwater flood management projects.
3. Cooperation and coordination among regional stakeholders, as well as input and comments from stakeholders, will help maximize the benefits realized within the East Stanislaus Region and ensure an IRWM Plan developed on a consensus-based approach is prepared.

These key messages will continue to be emphasized at all meetings, but especially highlighted at the initial public meeting on March 16, 2011. In addition, the key messages will be emphasized in press releases, media interviews, and project collateral pieces. The ESRWMP understands that individual stakeholders' concerns, interests, comments and suggestions will differ.

4 Stakeholder Involvement and Outreach

4.1 Overview

In order to engage stakeholders, including disadvantaged and tribal communities, the East Stanislaus Region conducts various meetings that are open to the public. The ESRWMP will conduct an initial

workshop on March 16, 2011 to announce the creation of the East Stanislaus Region and the IRWM planning process within the Region. At this meeting, contact information of all meeting attendees will be compiled and a stakeholder list will be created. The stakeholder contact list will continually be updated as new persons, entities, and organizations express interest in the IRWM planning process. The most recent version of this stakeholder list is included in Appendix A.

In addition to providing general information about the IRWM planning process, a call for applications for participation on the Public Advisory Committee (PAC) will be conducted in which stakeholders who want to become a member of the PAC can voice their interest in doing so, understanding that they will attend regularly scheduled meetings and are committing to a designated person or alternate in attendance. The PAC serves as one venue for conveying stakeholders input, comments, interests and ideas to the planning process.

The public outreach process for the East Stanislaus Region provides stakeholders with two options for involvement: (1) general public participation at the ESRWMP, Steering Committee, and PAC meetings, and (2) involvement through participation as a member of the PAC. This format ensures both a balanced and diverse collection of stakeholders due to the flexibility in the level of commitment and involvement for those interested.

The following methods are used to not only disseminate information to stakeholders, disadvantaged and tribal communities and the general public, but to allow stakeholders and the public to provide input, ask questions, and participate in the planning process and IRWM Plan development process:

- ESRWMP, Steering Committee, and PAC meetings
- East Stanislaus IRWM planning website (to be launched in October 2011)
- Handouts, newsletters, advertisements, press releases or special events

The methods for public involvement are discussed in more detail in the following sections.

4.2 Public Outreach

In order to make the public both aware of and a part of the regional water management planning and IRWM planning efforts within the Region, various methods will be applied to reach a varied audience. Public workshops will be conducted to introduce the IRWM process and, as needed, to update the public at key junctures in the regional water management process and to allow for public input. The ESRWMP will conduct meetings for themselves, the Steering Committee, and the Public Advisory Committee. The public will be allowed to attend Steering Committee and Public Advisory Committee meetings and provide comments on both agendized and non-agendized items. The public may also attend open sessions of ESRWMP meetings to provide comments on agendized items only (similar to the way City Council meetings are conducted). The Steering Committee provides notice of all meeting types by posting the agenda, notices, and minutes on the East Stanislaus IRWM planning website (to be launched in October 2011), as well as a posting on a public announcement board and direct mailings to a mailing list of interested stakeholders. The Steering Committee ensures the meetings notices are posted with ample time for the public to participate in the meetings. Additionally, as documents are developed and

public review is solicited, copies are placed in public libraries for public access and on the Region's website.

Other mechanisms used to ensure public awareness of the East Stanislaus IRWM process include the development and distribution of brochures, fact sheets, IRWM process status newsletters, and brief updates. Hard copies are available at meetings and electronic copies are sent to the email distribution list and posted on the Region's website.

The East Stanislaus Region has developed a Region-specific website and plans to launch the website in October 2011. The ESRWMP members will include a link to the regional website on their respective websites. The brochures, handouts and other documents developed as part of the IRWM process will also be made available on the website for others to view.

4.3 Public Input

There are multiple ways for public to gain access to the ESRWMP and the overall IRWM process. The ESRWMP makes information available to the general public, including the status of the IRWM process and upcoming decisions to be made, through the handouts and website. If a member of the general public or a stakeholder has questions and comments, they are directed to a designated contact. At present, the designated contact is Jim Alves at the City of Modesto at the 209-571-5557.

The public can provide input to the ESRWMP by attending the meetings, calling the provided contact, or emailing the contact with comments and questions. The designated contact discusses the questions and comments received with the Steering Committee, who takes the public input into consideration and responds to each call or email, as appropriate. If the ESRWMP receives public comment directly, they provide the comments/input to the Steering Committee to consider and respond to as appropriate.

In order to address the diversity of water management issues, geographical representation and stakeholder interests within the East Stanislaus Region, the ESRWMP has identified and directly invited the following key parties to participate in meetings, committees and subcommittees:

- Modesto, Oakdale and Turlock Irrigation Districts
- the Cities of Riverbank, Waterford and Oakdale
- the Communities of Keyes, Denair, Del Rio, Westley, Riverbank Monterey Park, Knight's Ferry, Crows Landing, Grayson, Hickman, Empire and Riverdale
- Stanislaus County
- The Stanislaus County Farm Bureau,
- Friends of the Tuolumne River
- Gomes Lake
- Salida Sanitary Sewer District

Additionally, the ESRWMP plans to partner with local colleges, such as Modesto Junior College, California State University-Stanislaus, Humphreys College, and San Joaquin Valley College, to encourage participation from younger participants between the ages of 18 and 25. There is also the potential to

combine participation in meetings with classes and/or class projects and studies. By performing specific outreach to local colleges, a wide range of ideas can be accessed.

4.4 Committees

Steering Committee

The purpose of the Steering Committee (SC) is to lead the East Stanislaus Integrated Regional Water Management (IRWM) planning and implementation process with direction from and in coordination with the ESRWMP. The Steering Committee leads preparation and implementation of the IRWM Plan and future updates of the Plan. Representatives of the SC are generally those that are actively managing projects. Responsibilities of the SC include:

- Manage contracts, information/databases, reporting
- Manage the IRWM Plan development and implementation
- Provide guidance to consultants and manage contracts
- Manage budgets and schedule
- Coordinate with the Public Advisory Committee
- Present unresolved issues/work tasks to the Public Advisory Committee
- Generally manage the work
- Coordinate and implement the public outreach process
- Manage the East Stanislaus IRWMP website
- Ensure meetings are announced and posted in advance
- Coordinate distribution and posting of materials
- Manage the Public Advisory Committee meetings
- Convey Public Advisory Committee's recommendations to the ESRWMP

SC meetings are open to the general public and directly engage the public, as needed, such as times when public input is solicited on deliverables. During the public meetings, stakeholders can provide comments on agenda items and non-agenda items. An anticipated schedule of SC and PAC meetings are included in Appendix B.

Public Advisory Committee

As previously mentioned, at the March 16, 2011 East Stanislaus IRWM kickoff meeting, persons and entities interested in participating in the Public Advisory Committee (PAC) were invited to sign-up for participation on the committee. The purpose of the PAC is to represent a diverse set of East Stanislaus Region stakeholder interests and have a central and guiding role in developing and implementing the East Stanislaus IRWM Plan. The PAC will provide input on various aspects of the IRWM planning process and related work products; consensus will be sought on all PAC-reviewed work products. Whenever consensus cannot be reached, the IRWM Plan will reflect the opinion of the majority of PAC members

with minority opinions documented in the meeting minutes. The PAC members will be asked and encouraged to participate as follows.

- Designate one representative, and if appropriate one alternate, to serve on the PAC
- Attend and participate in PAC meetings
- When appropriate, specifically represent the interests and needs of any Disadvantaged Community located within the PAC member's jurisdiction
- Review and provide timely comments on draft work products
- Adopt, or provide written support for, the East Stanislaus IRWM Plan

To help the PAC run smoothly and be successful, Roles and Responsibilities will be outlined and agreed upon by the members. The Roles and Responsibilities will govern the way in which the PAC makes decisions and provides input to the IRWM planning process. The Roles and Responsibilities will address the following:

- Guidelines for communication
- Attendance expectations
- Participation during meetings
- Confidentiality of discussion items
- Information sharing
- Decision-making
- Work product review and development
- Media contact
- Amendments to Roles and Responsibilities

5 Disadvantaged Communities Outreach

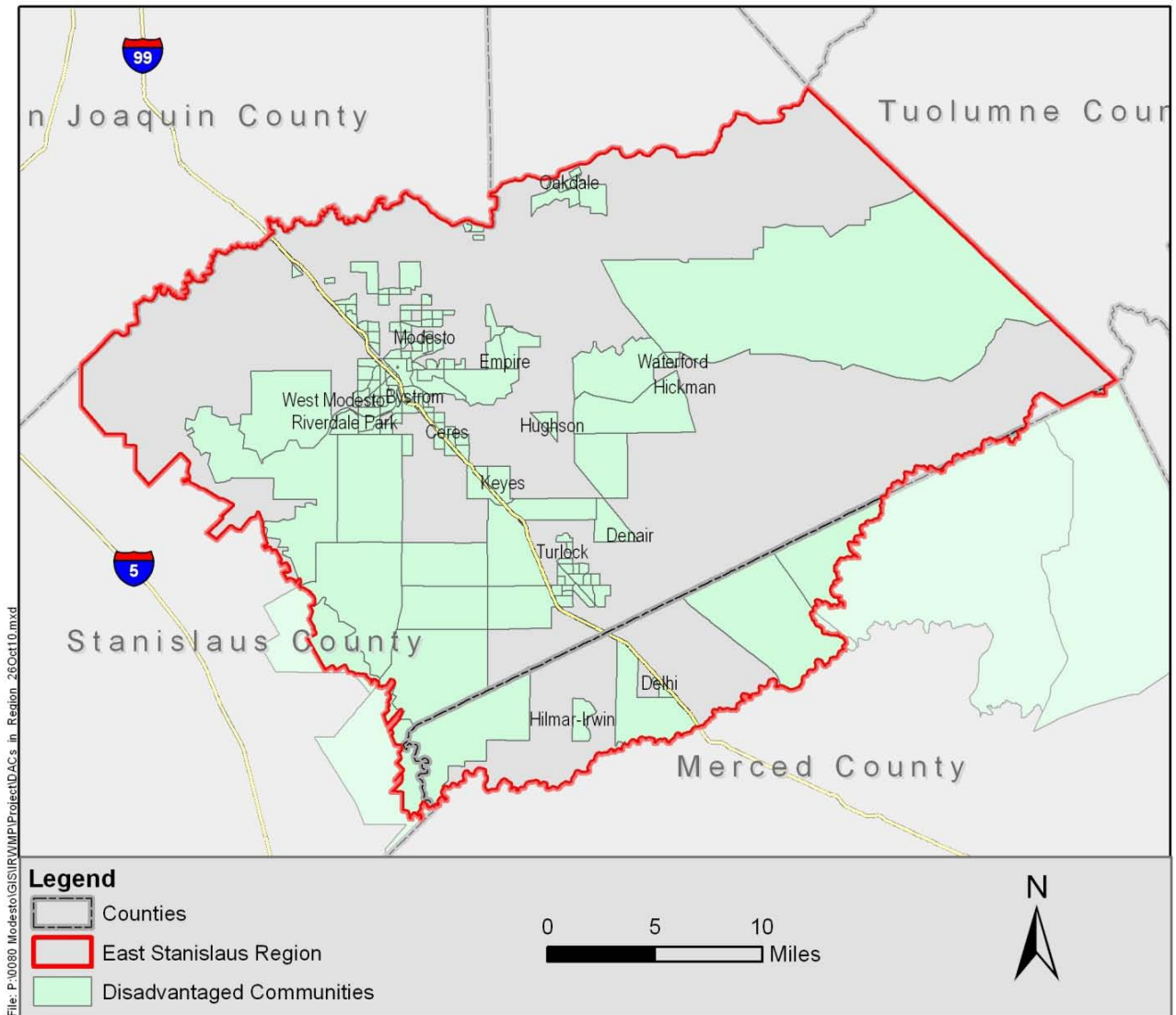
A Disadvantaged Community (DAC), according to the State of California (CA Water Code, Section 79505.5(a)), is a community with a Median Household Income (MHI) less than 80 percent of the California statewide household income. According to 2000 U.S. Census data, the most recent, accurate Census data available, a number of DACs exist within the East Stanislaus Region. The California statewide MHI was \$47,493, thus communities with an average MHI of \$37,994 or less are considered DACs. Within the East Stanislaus Region, the communities of Hickman, Keyes, Bret Harte, Bystrom, Empire, Shackelford, West Modesto, Riverdale Park, and portions of Modesto, Turlock, Denair and Ceres are DACs. Involvement and participation by representatives of these communities during the East Stanislaus IRWM planning process will be solicited and encouraged will help understand the issues confronted by disadvantaged communities and better address the needs of minority and/or low-income communities. Objectives of specific outreach to DACs include:

- Solicit involvement by individual representatives from DACs within the East Stanislaus Region and encourage participation by those representatives as members of the PAC.

Outreach and Communications Plan

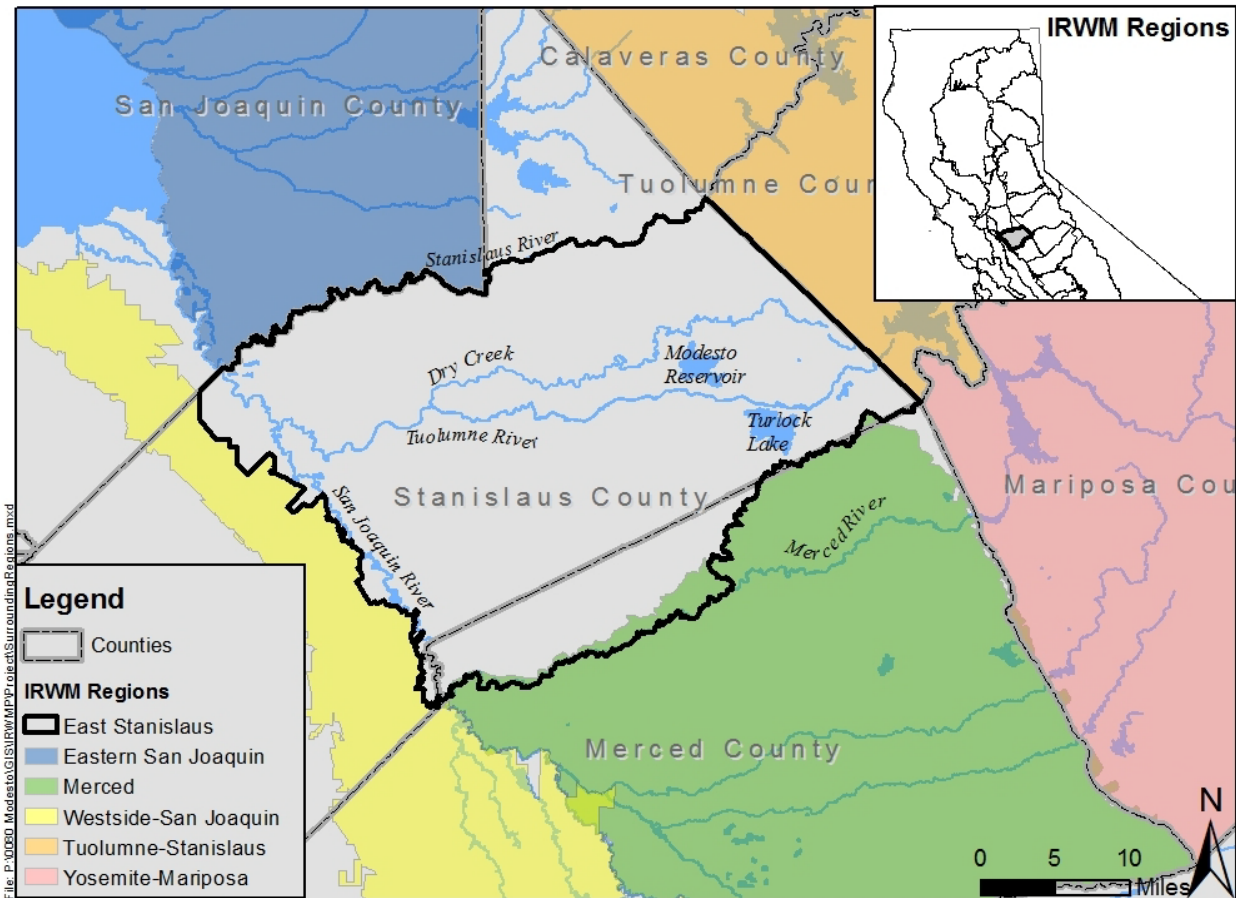
- For DACs which do not have designated community representatives on the PAC, encourage other PAC members to specifically advocate and represent the interests of those DACs which may lie within a PAC member's jurisdiction or area of special interest.
- Inform representatives and residents of DACs via flyers and newspaper notices about opportunities to get involved with the East Stanislaus IRWM planning process and participate in development, integration, and prioritization of projects.

The following shows the locations of the DACs within the East Stanislaus Region.



6 Inter-Regional Coordination

The East Stanislaus region borders the Eastern San Joaquin, Westside-San Joaquin, Yosemite-Mariposa, and Tuolumne-Stanislaus regions and has a slight overlap with the Merced region as depicted in the following figure.



The East Stanislaus Region was developed to fill in the obvious void in IRWM coverage in the Central Valley. When determining the boundaries for the Region, however, natural water boundaries were also important so that the Region would make sense from a watershed perspective, given the region's use of surface water as part of its supply and distinct features. This criterion resulted in a triangular area in the north-eastern portion of Stanislaus County being uncovered by the East Stanislaus Region. It is not in the Modesto groundwater basin, which was used to determine the northern boundary and its surface water drains into the East San Joaquin Region. This area overlies the Eastern San Joaquin groundwater basin, an area mostly covered by the Eastern San Joaquin IRWM Region. The East Stanislaus Region plans to discuss the triangular gap with the Eastern San Joaquin Region to ensure that stakeholders in that area are not neglected.

The ESRWMP has an ongoing relationship with members of the Westside-San Joaquin region in which members of the ESRWMP have attended meetings with the Westside-San Joaquin Region and participated in the planning process.

Because development of the East Stanislaus Region is relatively new, relationships with other IRWM regions are in initial stages or have not yet materialized. The ESRWMP plans to discuss water management strategies that have or will be employed by each of the neighboring IRWM Regions to identify opportunities for inter-regional collaboration and to optimize management strategies. The ESRWMP has had contact with the Merced, Tuolumne-Stanislaus and Yosemite-Mariposa regions. The

Outreach and Communications Plan

Tuolumne-Stanislaus and East Stanislaus regions have discussed developing protocol for inter-regional coordination and communication; once these protocols are finalized, the Outreach and Communication Plan will be amended to include them as an appendix. Letters of Cooperation may also be developed with surrounding regions which will outline methods for communication and coordination. The surrounding regions have public meetings that representatives from the East Stanislaus region will attend periodically to stay up to date on the regions' progress. The anticipated meeting dates open to the public conducted by the surrounding regions are summarized in the following table.

Region	Website	Anticipated Meeting Schedule
Eastern San Joaquin	http://www.gbawater.org/IRWMP/IRWMP.html	2 nd Wednesday of the month
Tuolumne-Stanislaus	http://www.tudwater.com/project_development/integrated-regional-water-management-plan.htm	3 rd Wednesday of the month
Merced	http://www.mercedirwmp.org/	TBD
Yosemite-Mariposa	--	TBD
Westside-San Joaquin	--	TBD

Appendix A – Stakeholder List 15September2011

IRWMP Stakeholder Contact List

10/10/2011

Category / Stakeholder	Contact	Title	Phone No.	Email	Address
Regional Water Management Group Members					
City of Modesto	Nick Pinhey	Direct of Utility Planning & Projects	209-577-5213	npinhey@modestogov.com	Utility Planning and Projects Dept, 1010 Tenth St, Ste 4600, PO Box 642 Modesto, CA 95353
City of Modesto	Jack Bond	Senior Civil Engineer	209-577-5424	jbond@modestogov.com	Utility Planning and Projects Dept, 1010 Tenth St, Ste 4600, PO Box 642 Modesto, CA 95353
City of Modesto	Jim Alves	Associate Civil Engineer	209-571-5557	jalves@modestogov.com	Public Works Department, 1010 Tenth St, Ste 4600, PO Box 642 Modesto, CA 95353
City of Turlock	Dan Madden	Municipal Services Director	209-668-5599 x4401	dmadden@turlock.ca.us	156 S Broadway, Ste 270, Turlock, CA 95380
City of Turlock	Mike Cooke	Regulatory Affairs Manager	209-668-5599 x4418	mcooke@turlock.ca.us	156 S Broadway, Ste 270, Turlock, CA 95380
City of Turlock	Toni Cordell	Staff Services Technician	209-668-4474 x4474	tcordell@turlock.ca.us	156 S Broadway, Ste 270, Turlock, CA 95380
City of Ceres	Mike Brinton	Public Works Director	209-538-5748	Michael.Brinton@ci.ceres.ca.us	2220 Hackett, Ceres, CA 95307
City of Ceres	Toby Wells	City Engineer	209-538-5630	Toby.Wells@ci.ceres.ca.us	2220 Magnolia St, Ceres, CA 95307
City of Hughson	Thom Clark	Community Development Director	209-883-0811 ext 33	tclark@hughson.org	7018 Pine St. PO Box 9, Hughson, CA 95326
City of Hughson	Dominique Spinale	Management Analyst	209-883-4054	dspinale@hughson.org	7018 Pine St. PO Box 9, Hughson, CA 95326
Cities & Communities					
City of Patterson	Mike Willett	Public Works Director	209-895-8065	mwillett@patterson.ca.us	1 Plaza Circle, Patterson, CA 95363
City of Newman	Garner Reynolds	Public Works Director	209-862-4448	greynolds@citiyofnewman.com	1162 Main St. PO Box 787, Newman, CA 95360
City of Riverbank	J.D. Hightower	Development Services Director	209-863-7124	jhightower@riverbank.org	6707 Third St. Riverbank, CA 95367
City of Waterford	Lori Martin	City Clerk	209-874-2328	cityclerk@cityofwaterford.org	312 E Street, Waterford, CA 95386
City of Oakdale	Joe Leach	Public Works Director	209-845-3615	jleach@ci.oakdale.ca.us	455 South Fifth Ave, Oakdale, CA 95361
Community of Keyes	Rosemary Winter	Keyes Community Services District Utility Foreman	209-668-8341	rwinter1950@yahoo.com	5061 7th Street, P.O. Box 699, Keyes, CA 95328
Community of Denair	Dennis Findley	Denair Municipal Advisory council	209-669-8560	silkscm@ix.netcom.com	3850 N. Gratton Rd, P.O. Box 217, Denair CA 95316
Community of Del Rio					
Community of Westley	Coleen Sanguinetti	Westly Community Services District	209-892-7953	coleen@gvni.com	PO Box 26, Crows Landing CA 95313
Community of Riverdale	Kelly Murphy	Riverdale Park Tract Community Services Distrit	209-537-1214		PO Box 26, Modesto, CA 95358
Community of Monterey Park	Franisco Diaz	Monterey Park Tract Community Services District	209-499-1113	daiz.@hotmail.com	PO Box 1301, Ceres, CA 95307
Community of Knight's Ferry	Christine Bonjour	Knights Ferry Comminity Services District	209-881-3300	atlascu@sbcglobal.net	PO Box 860, Oakdale, CA 95361-0860
Community of Crows Landing	Connie Payan	Crows Landing Community Services District	209-484-1096	connieepayan@gmail.com	PO box 537, Crows Landing, CA 95313
Disadvantaged Communties					
Community of Grayson	Connie Payan	Grayson Community Services District	209-484-1096	connieepayan@gmail.com	PO Box 158, Westly, CA 95387
Community of Hickman					
Community of Empire					
Community of Riverdale	Kelly Murphy	Riverdale Park Tract Community Services Disrict	209-537-1214		PO Box 26, Modesto, CA 95358
Irrigation and Water Districts					
Turlock Irrigation District	Bob Nees	Interim Assistant GM - Civil Engineering & Water Resources	209-883-8300	bnees@tid.org	333 East Canal Dr. PO Box 949, Turlock, CA 95381
Modesto Irrigation District	Walt Ward	Assistant GM - Water Operations	209-526-7459	walterw@mid.org	1231 Eleventh St. Modesto, CA 95354 or PO Box 4060, Modesto, CA 95352
Eastside Irrigation District	Al Rossini		209-874-3739		
Oakdale Irrigation District	Steve Knell	General Manager	209-847-0341 x207	srknell@oakdaleirrigation.com	1205 East F Street, Oakdale, CA 95361
Merced Irrigation District	Tom Stephens	Water Resources Specialist	209-722-5761	tstephens@mercedid.org	744 W 20th St. Merced, CA 95340
Ballico-Cortez Water District	Victor Yamamoto				
Delhi Water District	Stephany Perry				
San Luis & Delta-Mendota Water Authority	Ara Azhderian	Water Policy Administrator	209-826-9696	ara.azhderian@sldma.org	
Hilmar Water District	Dale Wickstrom	Manager	209-632-3522	dale@hilmarcwg.org	P.O. Box 1060, 8319 Landor Ave, Hilmar, CA 95324
Counties					
Stanislaus County	Matt Machado	Stanislaus County Public Works Director	209-525-6550	machadom@stancounty.com	1716 Morgan Rd, Modesto CA 95358
Stanislaus County	Sonya Harrigfeld	Director of Environmental Resources	209-525-6770	Harrigfeld@envres.org	3800 Cornucopia Way, Suite C, Modesto, CA 95358
Merced County	Ron Rowe	Environmental Health Specialist	209-381-1097	rrowe@co.merced.ca.us	2222 M St. Merced, CA 95340
Others					
Stanislaus County Farm Bureau	Wayne Zipser	Executive Director	209-522-7278	WayneZ@stanfarmbureau.org	1201 L Street, Modesto, CA 9353 / P.O. Box 3070
Environmental Group(s)					
Friends of the Tuolumne	Allison Boucher			aboucher@bendbroadband.com	1900 NE 3rd Street, Ste 106, PMB 314, Bend, OR 97701
Turlock State Park					
Native American Tribe(s)					
Gomes Lake (Stanislaus County)	Matt Machado	Stanislaus County Public Works Director	209-525-6550	machadom@stancounty.com	1716 Morgan Rd, Modesto CA 95358
Tuolumne River Trust			209-236-0330		1022 14th Street, Modesto, CA 95354
Salida Sanitary Sewer District	Mike Gilton				
Empire Sanitary Sewer District					
Modesto citizen	Ron Jeske	Retired. Current member of the Modesto CIP Task Force Committee	209-525-3579	ronjeske@sbcglobal.net	1109 East Orangeburg Ave, unit 19, Modesto, CA 95350
Modesto citizen	Jesse Roseman		510-220-6927	jesseroseman@gmail.com	1201 Lexington Dr., Modesto, CA 95350
Neighboring IRWM Regions					
Merced	Hicham Eltal	MAGPI Chairman	209-722-5761	heltal@mercedid.org	P.O. Box 2288, Merced, CA 95344
Westside-San Joaquin	Ara Azhderian	Water policy Administrator (SLDMWA)	209-826-9696	ara.azhderian@sldma.org	
Tuolumne-Stanislaus	Pete Kampa	General Manager (Tuolumne Utilities District)	209-532-5536	pkampa@tuolumneutilities.com	
	John Mills		209-532-0432	sixbit@sonnet.com	P.O. Box 1160, Columbia, CA 95310
Eastern San Joaquin	Mel Lytle	Water Resources Coordinator (San Joaquin County Public Works)	209-468-3089	mlytle@sigov.org	

Appendix B – SC and PAC Anticipated Meeting Schedules

STEERING COMMITTEE MEETING TOPICS

SC Meeting No.	Estimated Date	Meeting Topic / Purpose
1	9/29/2011	<ul style="list-style-type: none"> • SC Roles & Responsibilities • East Stanislaus Region Goals & Objectives • Outreach Plan
2	10/27/2011	<ul style="list-style-type: none"> • East Stanislaus Region Goals & Objectives • Planning Grant Application • Project Solicitation & Prioritization
3	12/1/2011	<ul style="list-style-type: none"> • Project solicitation process
4	1/26/2012	<ul style="list-style-type: none"> • Projects submitted, integrated and prioritized
5	2/23/2012	<ul style="list-style-type: none"> • Impacts, benefits and financing
6	3/22/2012	<ul style="list-style-type: none"> • Revisit project details • Outline Implementation Plan
7	4/26/2012	<ul style="list-style-type: none"> • Implementation plan: schedule, financing, environmental, integration
8	5/24/2012	<ul style="list-style-type: none"> • Monitoring plan to track East Stanislaus IRWMP performance • Data Management
9	6/28/2012	<ul style="list-style-type: none"> • Climate change; relation to local land use planning
10	8/23/2012	<ul style="list-style-type: none"> • Draft plan review and endorsement
11	9/27/2012 ^a	<ul style="list-style-type: none"> • Adopt IRWMP

a. Implementation Grant (2-Step Process Anticipated). Step 1 – IRWMP Evaluation Phase, applications due Fall 2012, therefore the East Stanislaus IRWMP must be adopted by then.

PUBLIC ADVISORY COMMITTEE MEETING TOPICS

PAC Workshop No.	Estimated Month, Year	Meeting Topic / Purpose
1	9/29/2011	<ul style="list-style-type: none"> Integrated Regional Water Management Program process, schedule and goals PAC Roles & Responsibilities East Stanislaus Region Goals & Objectives
2	10/27/2011	<ul style="list-style-type: none"> East Stanislaus Region Conflicts, Goals & Objectives Project Solicitation Process Introduction to Project Prioritization
3	12/1/2011	<ul style="list-style-type: none"> Project Solicitation Process Project Prioritization
4	1/26/2012	<ul style="list-style-type: none"> Project Review, Integration and Prioritization
5	2/23/2012	<ul style="list-style-type: none"> Impacts, Benefits and Financing
6	3/22/2012	<ul style="list-style-type: none"> Revisit Project Details Outline Implementation Plan
7	4/26/2012	<ul style="list-style-type: none"> Implementation Plan: schedule, financing, environmental, integration
8	5/24/2012	<ul style="list-style-type: none"> Monitoring Plan to track East Stanislaus IRWMP performance Data Management
9	6/28/2012	<ul style="list-style-type: none"> Climate change; relation to local land use planning
10	8/23/2012	<ul style="list-style-type: none"> Draft Plan Review and Endorsement